



ETPL (INDIA)

**WORKFORCE
SKILL
DEVELOPMENT**

WORKFORCE SKILL DEVELOPMENT

Bringing massive pool of untapped talent to skilled workforce. Workforce development is a program designed to identify, train and place recent college graduates, high school drop-outs, who are either unemployed or underemployed.

The program benefits organization, industry, as well as the local communities and unemployed population.

Closing the skills gap : Creating workforce-development programs that work for everyone.

Our target group includes a wide range of learners, especially those who are from `Bottom of Pyramid` groups and have little or no exposure to skills and training. We also deliver the widest range of employability programmes for under graduates and post graduates that hone their work skills and provide them a combination of domain and life skills.

On the one hand, almost every employer say they cannot find people with the skills they need, even for entry-level jobs. Almost 60 percent complain of lack of preparation, even for entry-level jobs. On the other hand, this “skills gap” represents a massive pool of untapped talent, and it has dire consequences, including economic under-performance, social unrest, and individual.

SINCE 2009

PROGRAM OVERVIEW

Workforce development is a program designed to identify, train and place recent college graduates, high school drop-outs, who are either unemployed or underemployed. The program benefits organization, industry, as well as the local communities and unemployed population.

PROGRAM BENEFITS

- Provides a low-cost, highly efficient pipeline of talent
- Saves the company time with recruiting efforts
- Provides pre-trained interns for on-the-job evaluation
- Internships can be fully or partially funded
- Excellent new tool for employer outreach
- Connects workforce to full-time, career-appropriate job opportunities
- Provides both contract and full-time job opportunities
- Provides career readiness skills needed to be professionally successful
- Results in significant earnings increases
- Career Advancement

8000+ Trained

OUR SERVICES

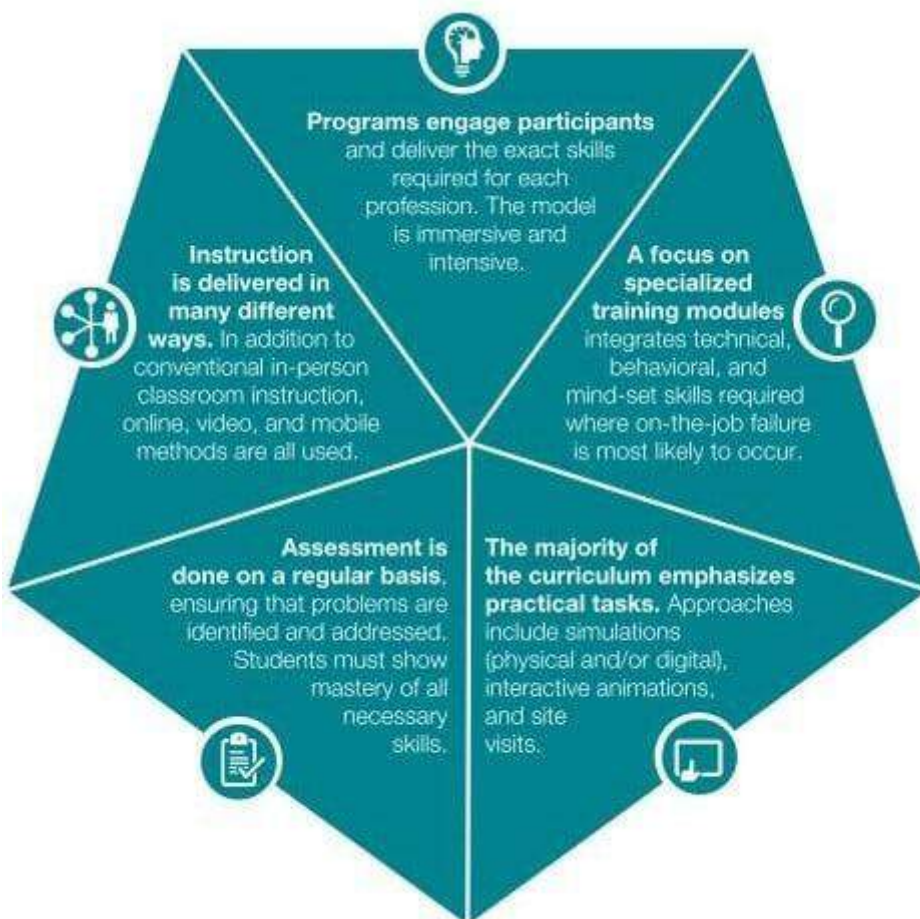
- Workforce Skill Development for Jobs
- Skills Development for Schools and Colleges
- Skills for Entrepreneurship Development
- Skills Up-gradation for Employees
- Training for Overseas Placements
- Career Guidance
- Job Fairs
- Placement and Staffing
- Career Assessments

COURSES OFFERED

- Agriculture
- Banking & Finance
- Handicraft
- Hospitality
- Information Technology
- Professional Skills
- Retail

60% + Placed

EFFECTIVE WORKFORCE DEVELOPMENT INCORPORATES 5 COMPONENTS



Tablet based Skilling

ETPL(INDIA)



+91 364 2522723



www.etplservices.com



The Nest, Lummawrie, Laitumkhrach,
Shillong , 793003, Meghalaya , India



helpdesk@etplservices.com

Contact Us